



PennState
Office for General Education

**SEED
GRANTS**

PROCESS and TIMELINE

2012

A University-wide conversation began

2013-2014

**Gen Ed Task Force deliberates models
and makes recommendations**

2015-2016

**Faculty Senate implementation reports
from University Faculty Senate**

2016-2017

Formation of Office for General Education

SUMMER/ FALL 2018

New requirements start for students

CONNECTING
**CURIOSITY
& CAREER**

ONGOING PROJECTS

CONNECTING
**CURIOSITY
& CAREER**

NSO/STUDENT MATERIALS

New pre-NSO module and materials
Check sheet and interactive planning tool

REBRANDING

Marketing to faculty, students etc.

SEED GRANTS

22 newly funded proposals for 2018

CAPACITY

>3000 at UP for FALL 18

Reasonable numbers of seats at all
locations for FALL 18

CONNECTING
CURIOSITY



CAREER

**How do we
change how
students talk
about General
Education?**

**By changing
how **we, as a**
University,
discuss General
Education.**

YOUR DEGREE PROGRAM

**GENERAL
EDUCATION**

CONNECTING
**CURIOSITY
& CAREER**

**ACADEMIC
EXPERIENCES**



GENERAL EDUCATION



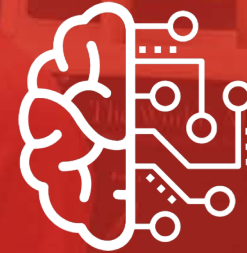
STRONG FOUNDATIONS

- Writing/Speaking (GWS)
- Quantification (GQ)



TRANSFORMATIVE EXPLORATIONS

- Health and Wellness (GHW)
- Natural Sciences (GN)
- Arts (GA)
- Humanities (GH)
- Social and Behavioral Sciences (GS)



INTEGRATIVE LEARNING

- Inter-domain courses
- Linked Courses



GENERAL EDUCATION LEARNING OBJECTIVES

EFFECTIVE COMMUNICATION

KEY LITERACIES

e.g. quantitative, health, intercultural, historical, aesthetic, linguistic, scientific

CRITICAL AND ANALYTICAL THINKING

INTEGRATIVE THINKING

CREATIVE THINKING

GLOBAL LEARNING

SOCIAL RESPONSIBILITY AND ETHICAL REASONING



INTEGRATIVE STUDIES - 6 credits

Inter-domain Courses

- 3 credits each, students must take 2
- 2 domains represented in each course
- creates up to 6 credits of exploration in General Education because may count toward both domains
- 2 GX attributes and Inter-Domain attribute plus others as appropriate; N or Q (honors) Suffix

Linked Courses

- 2 courses that link in some substantial way
- each course used by a student is designated in a different domain
- may be used toward integrative studies requirement or regular domain course requirement if link is not taken
- One GX attribute and Linked attribute plus others as appropriate; Z Suffix



**SEED
GRANTS**

2017: 71 grants awarded

2018: 20 grants awarded

Teaching and Learning with Technology

University Libraries

World Campus

Schreyer Institute for Teaching Excellence

Learning Outcomes Assessment

Sustainability Institute



EXAMPLES OF 2018 SEED GRANT COURSES

- **Addiction: Science to Society**
- **STEAM 101: Art as a Means to Communicate STEM**
- **Chemistry in World Wars I and II**
- **Health and the Media**
- **Three courses on Climate Change (GA, GS, GN)**
- **Science and Politics of Women in Sport**
- **Understanding and Enhancing Creativity**
- **LGBTQ+ Identity, Culture and The Arts**
- **Roots of Conflict, Pathways to Peace**
- **Cultural Perspectives on Mathematics**
- **A&A 101 Designing a Sustainable House**

FACULTY SCHOLARS

16 SCHOLARS

**7 FROM UNIVERSITY PARK –
ONE PER DOMAIN AND FOUNDATION**

5 FROM CAMPUS COLLEGES

**4 FROM UNIVERSITY COLLEGE
REPRESENTING GEOGRAPHIC GROUPS**

PARTIAL SUMMER SUPPORT FOR EFFORT

CONNECTING
**CURIOSITY
& CAREER**

**Supporting Integrative Studies
course development**

**Helping craft narrative for
general education**

Gen Ed HUB development

**Contributing to professional
development events for faculty**

**Attended AACU General Education
Institute summer 2017**

Advisory board for OGE

CONNECTING
CURIOSITY

&

CAREER

**SCHOLAR
ACTIVITIES**

RESOURCES

CONNECTING
CURIOSITY

&

CAREER

BULLETIN

APPROVED COURSE LIST

AUDIT AND ADVISING SESSION RECORDINGS

GENED.PSU.EDU

Goals for Today

CONNECTING
CURIOSITY

&

CAREER

- Network with and learn from colleagues with similar interests in Integrative Studies courses
- Identify resources to assist you as you develop your course or prepare to deliver your course
- Reflect on and prepare for assessment of your course
- Contribute to the university efforts of elevating General Education

CONNECTING
CURIOSITY



CAREER

gened.psu.edu

gened@psu.edu



PennState
Office for
General Education